

# *geodyna® 980L and 4800L*

*Truck wheel balancers*



**Options:**

- Pneumatic loading device
- Centring stars
- Truck wheel cones

## Off-the-truck wheel balancers



Different to on-the-truck wheel balancers the off-the-truck wheel balancers measure both the static and the dynamic portions of unbalance and consequently increase truck wheel life considerably.

### **Premium features of geodyna 980L:**

The distance rim/machine and rim diameter are entered semi-automatically. This is particularly necessary when balancing light-alloy wheels where two adhesive weights have to be placed inside the rim. As a result balancing of light-alloy rims is as easy as balancing of steel rims.



The gauge arm is provided with a patented wheel weight clamp which keeps the wheel weight in the correct position during weight placement.

The electronic friction brake firmly holds the wheel in every position, meaning there is no need for a pedal-operated brake.

The split weight mode allows easy positioning of adhesive weights on light-alloy rims (both on truck and car wheels) in a hidden position.

The cone adaptor is provided with a spacer and a cone for balancing of light-truck wheels. Truck wheels can be clamped and balanced using either of two optional clamping kits.

The patented measuring system features virtual plane measurement technology (VPM) which ensures the most accurate results.

### Patented optimisation



**Off-the-truck wheel balancers**

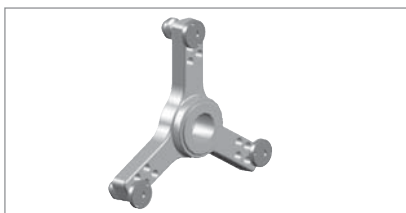


**Additional features of geodyna 4800L:**

- 17" VGA monitor
- Extensive help texts in more than 20 languages
- asanetwork capability



**Accessories**



3-arm star

**(ref. no. 30380)**

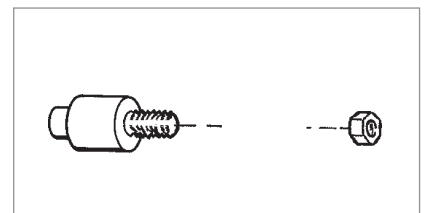
For truck / light-truck wheels with pitch circle diameters of 170 / 184,15 / 205 / 222,25 / 245 mm



Pre-centring ring for light-truck wheels

**(ref. no. 30616)**

For rims of 17.5" and 19.5" diameter and centre hole of 202 mm. To be used in conjunction with the 3-arm star.



1 off truck bolt for Alcoa rims

**(ref. no. 30381)**

**Indispensable accessories**



Standard clamping kit with 2 truck cones (198 – 225 mm / 270 – 286.5 mm)

**(ref. no. 4028713)**



Professional clamping kit for stud-hole location of wheels with 4-arm / 5-arm star and 5 bolts

**(ref. no. 4028764)**



Pneumatic loading device

**(ref. no. 4028401)**

<b>Technical Data</b>		<b>980L and 4800L</b>
Power supply (V)		230 Volts, single phase / 50 / 60 Hz
Diameter range of centring cone (mm)		Light truck cone: 120 mm – 174 mm
Diameter of shaft (mm)		40
Measuring speed (rpm)		98
Accuracy (g)		1
Rim width (dynamic balancing) (inch)		3 – 20
Rim diameter (inch)		8 – 30
Max. wheel width (mm)		650
Max. wheel diameter (mm)		1300
Max. wheel weight (kg)		250
Data entry of DISTANCE		Semiautomatic via gauge arm
Data entry of DIAMETER		Semiautomatic via gauge arm
Data entry of WIDTH		Manual
Dimensions (mm) H x W x D with wheel hood open		1860 x 1350 x 1120
Weight of machine incl. cone adaptor	980L	255
	4800L	270

**Snap-on® Equipment**

**France**

Snap-on Equipment France  
Za du Vert Galant · 15, rue de la Guivernone BP7175 · 95310 Saint-Ouen-L'Aumône  
Tel: +33 (0) 134/48 58-78 · Fax: +33 (0) 134/48 58-70 · [www.snapon-equipment.fr](http://www.snapon-equipment.fr)

**Germany**

Snap-on Equipment GmbH  
Undercar  
Werner-von-Siemens-Str. 2 · 64319 Pfungstadt  
Tel: +49 (0) 6157/12-0 · Fax: +49 (0) 6157/12-286 · [www.snapon-equipment.de](http://www.snapon-equipment.de)

**Italy**

Snap-on Equipment s.r.l.  
Via Prov. Carpi, 33 · 42015 Correggio (RE)  
Tel: +39 0522/733-411 · Fax: +39 0522/733-410 · [www.snapon-equipment.it](http://www.snapon-equipment.it)

**United Kingdom**

Snap-on Equipment Ltd.  
48 Sutton Park Avenue · Reading RG6 1AZ  
Tel: +44 (0) 118/929-6811 · Fax: +44 (0) 118/966-4369 · [www.hofmann.co.uk](http://www.hofmann.co.uk)

**Export – Europe, Africa, Middle East, Australia, NZ**

Snap-on Equipment s.r.l.  
Via Prov. Carpi, 33 · 42015 Correggio (RE)  
Tel: +39 0522/733-483 · Fax: +39 0522/733-479 · [www.hofmann-ge.com](http://www.hofmann-ge.com)