

THERMOHYDRAULIC



2009

USAG

50/2009

€

 **virax**



ex USAG 316 CN

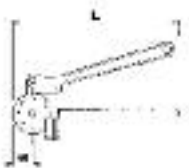
Tube bending pliers for steel pipes

Bending capacity on hardened and annealed copper pipes: Ø 6 to 18 mm and Ø 1/4" to 5/8 OD / wall thickness 1 to 1,2 mm. Bending radius: 2 to 3,5 D

For forming very short radius bends and counter-bends.

Bending angle: up to 180° 0 to 180° graduations°.

Steel handle. Machined groove.



tube Ø mm	AxL mm	kg	code
6	11,5x190	0,190	V251106
8	14,5x210	0,210	V251108
10	23,5x250	0,250	V251110
12	30x270	0,270	V251112
14	42,5x350	0,350	V251114
16	55x380	0,380	V251116



Crossbow bender

Lightweight alloy body.

For annealed copper pipes: Ø 10 a 22 mm - Wall thickness : 1 mm.

For PEX/AL/PEX pipes: Ø 10 a 26 mm.

Bending radius: from 3 to 4 D. Bending angle: up to 90°

Supplied in plastic case

Ø tube mm.	tube	kg	code
10-12-14-16-18-20-22 mm	copper	5,150	V250100
14-16-18-20-26 mm	pex/al/pex	5,440	V250151



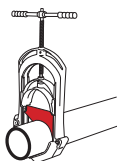
Guillotine pipe cutters

Max thickness 18 mm

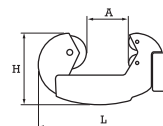
Square drive 14 mm.

A wrench or extension can be used for cutting pipes in deep trenches. Releasing the catch on the hinged lower V-shaped jaw allows the cutter to be positioned anywhere along the pipe.

Stainless steel blade.



A tube "	A tube mm	kg	code
4	125	7,500	V211512
8	225	17,000	V211522



ex USAG 314 AN

Mini copper pipe cutter 4-28 mm

Max thickness 2 mm.

Designed in particular for maintenance applications.

Compact cutter, can be used on pipes in situ.

Thumb-wheel slider control.

A tube "	A tube mm	LxH mm	kg	code
3/16-5/8	4-16	63x39	0,140	V210310
1/4-1.1/8	6-28	80x46	0,205	V210312



Spare cutting wheel

for pipe cutter	kg	code
210310-312	10	0,030 V210350

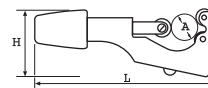


Copper pipe cutter 6-28 mm

Max thickness: 2 mm.

Slide-mounted cutting wheel.

Spare cutting wheel in the knob.



A tube "	A tube mm	LxH mm	kg	code
1/4-1.1/8	6-28	170x49	0,305	V210320



Spare cutting wheel

for pipe cutter	kg	code
210310-312	10	0,030 V210350



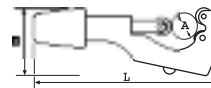
Copper pipe cutter 6-42 mm

Max thickness: 2 mm.

Slide-mounted cutting wheel.

Spare cutting wheel in the knob.

Retractable reamer in the body.

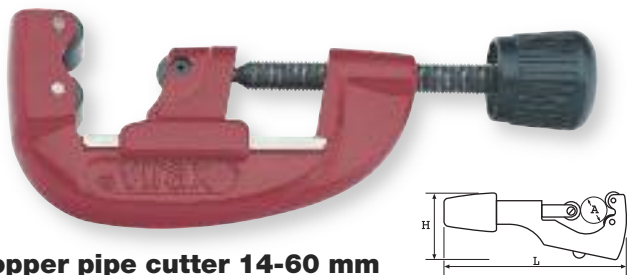


A tube "	A tube mm	LxH mm	kg	code
1/4-1.5/8	6-42	165x75	0,440	V210335



Spare cutting wheel

for pipe cutter	kg	code
V210335	10	0,030 V210350



Copper pipe cutter 14-60 mm

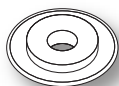
Max thickness: 2 mm.

Slider-mounted cutting wheel.

Phosphate-coated cutting wheel and rollers.

Knob provides excellent grip.

A tube "	A tube mm	LxH mm	kg	code
1/2-2.3/8	14-60	200x85	0,604	V210390



Spare cutting wheel

for pipe cutter		kg	code
V210390	10	0,080	V210350



ex USAG 314 D

Copper pipe cutter ZR32 6-32 mm

Max thickness 2 mm.

Fast: control knob allows very fast cutting wheel adjustment in both directions.

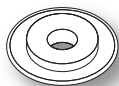
Grooved rollers: for cutting tight up against flanges.

Special steel cutting wheel mounted on a removable shaft for quick and easy replacement

Rotating reamer: interchangeable and retractable.

Spare cutting wheel supplied in the body of the pipe cutter.

A tube "	A tube mm	LxH mm	kg	code
1/4-1.5/16	6-32	135x55	0,470	V210300



Spare cutting wheel

for pipe cutter		kg	code
V210300	10	0,030	V210350



Spare reamer

for pipe cutter		kg	code
V210300	5	0,200	V221265



Stainless steel pipe cutter 14-60 mm

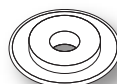
Maximum thickness: 2 mm.

Slider-mounted cutting wheel.

Stainless steel rollers.

Knob provides excellent grip.

A tube "	A tube mm	LxH mm	kg	code
1/2-2.3/8	14-60	200x85	0,600	V210392



Spare cutting wheel

for pipe cutter		kg	code
V210392	10	0,038	V210360



Plastic/composite material pipe cutter 50-110 mm

Max thickness: 8 mm.

Releasable nut for quick cutting-wheel adjustment in both directions.

Fitted with three rollers to avoid crushing the pipe.

A tube "	A tube mm	LxH mm	kg	code
2-4	50-110	165x75	1,230	V210630



Spare cutting wheel

for pipe cutter		kg	code
V210630	5	0,030	V210621



Pencil-type reamer with interchangeable blades

For copper, PVC, PEHD pipes.

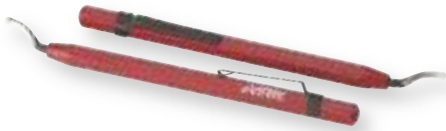
Possibility to replace the used blade.

Spare blade holder.

Possibility to choose the blade for the different pipes.

Supplied with 3 blades Cu, PCV and PEHD.

Kg	code
0,500	V221261



Standard reamer

Pencil-type with non-removable blade.

For deburring the inside of copper or other pipes, sheet metal edges, etc.

Pocket clip

For copper, PEHD, PVC pipes.

Kg	code
0,064	V221242

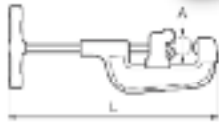


ex USAG 313

Stainless steel pipe cutter

Max thickness: 5 mm.

For quickly cutting steel pipes (gas-API-etc.) cleanly and squarely. Also works on stainless steel pipes (thickness >2 mm.) with cutting wheels V210123 and cast iron with cutting wheels V210122.



A tube "	A tube mm	L mm	kg	code
1/8 - 1.1/4	10 - 42	310	1,740	V210110
1/2 - 2	21 - 60	400	3,020	V210120
3/4 - 3	27 - 90	460	4,220	V210130
2 - 4	60 - 114	1030	9,00	V210145



Spare cutting wheel

Type	for pipe cutter	kg	code
Steel	V210110-120-130	5	0,170 V210121
Cast iron	V210110-120-130	5	0,170 V210122
Steel	V210145	5	0,170 V210141
Cast iron	V210145	5	0,170 V210142



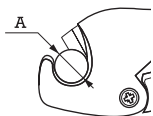
ex USAG 317 K

Pipe cutter PC 28, for PCV, PP, PE, PER, ABS, PEHD 28 mm.

Composite body.

Very ergonomic design, excellent grip.

Performs perfect cuts on most PE and multi-layer pipes.



A tube "	A tube mm	kg	code
1	28	0,170	V214026



ex USAG 317 C

Pipe cutter for PVC, PP, PE, PER, ABS, PEHD 63 mm.

Effort-reducing rack system.

Used for quickly cutting polyethylene and polypropylene pipes.

Hardened blades ensures a clean, square cut.

A tube "	A tube mm	kg	code
2.1/212-63	63	1,210	V211463



Spare blade

for pipe cutter	kg	code
V211463	1	0,200 V211403



ex USAG 317 B

Pipe cutter PC 40 for pipes PVC, PP, PE, PER, ABS, PEHD 42 mm.

Integral electrical wire-cutter

Ø max. 12 mm, cross section max. 4 x 2,5 mm².

Accurate

The "V" shaped profile of the upper arm perfectly guides the blade when cutting pipes of any diameter or material.

Chamfering tool

incorporated with the handle.

Bivelling angle: 15°.

Patented mechanism

Allows easy cutting action preventing the return of the blade.

A tube "	A tube mm	kg	code
1.5/8	42	0,670	V214040



Spare blade

for pipe cutter	kg	code
V214040	1	0,100 V214041



Double ratchet housing for manual threader with interchangeable heads

- for V136233-234-235-236-237

Capacity "	Pawls	kg	code
3/8-1.1/4	2	2,100	V136292



Single ratchet housing for manual threader with interchangeable heads

- for V136438-439

Capacity "	Pawls	kg	code
1.1/2-2	1	2,480	V136490



ex USAG 300 B

Complete heads with steel dies

Heads

with notched octagonal (or splined) drive for securing within the housing.

Lubrication and chip removal

assisted by large openings.

Cap

for accurate positioning of dies. Also allows them to be turned around to cut threads tight up against walls without risking to be pulled out.

Die position markings

remain perfectly visible at all times.

Guide hole

for self-centring of die-head.

Long-reach centring guide

for ease of working.

Thread	Ø "	Ø mm	code
BSPT dx	3/8	12/17	V136233
BSPT dx	1/2	15/21	V136234
BSPT dx	3/4	20/27	V136235
BSPT dx	1	26/34	V136236
BSPT dx	1.1/4	33/42	V136237
BSPT dx	1.1/2 *	40/49	V136438
BSPT dx	2 *	50/60	V136439

* For use with Phenix II B (rif V1375) remove the retaining ring



ex USAG 300 BA

Set of steel dies

Precision machined

from a special alloy steel guaranteeing a high cutting performance, excellent resilience and hardness.

Cutting profile

with a clearance angle to reduce friction.

Thread	Ø "	Ø mm	code
BSPT dx	3/8	12/17	V136203
BSPT dx	1/2	15/21	V136204
BSPT dx	3/4	20/27	V136205
BSPT dx	1	26/34	V136206
BSPT dx	1.1/4	33/42	V136207
BSPT dx	1.1/2-2	40/49-50/60	V136408



Assortment 1.1/2" - 2"

Tubular steel handles.

Right ratchet.

Ergonomic grip.

Easy head installation and removal.

Heads can also be used on Phenix II B portable electric threading machine.

Sheet steel case.

Description	Case	kg	code
1 head 1 pawl + 1 handle	sheet steel	12,8	V136460
BSPT Right : 1/2--2	660 x 200 x 110 mm		



ex USAG 300 T
Assortment 1/2" - 2"

Tubular steel handles.
Reversible ratchet for increased manoeuvrability.
Ergonomic grip.
Easy head installation and removal.
Heads can also be used on Phenix II B portable electric threading machine.
Sheet steel case.

Capacity :
Steel
BSPT Right : Ø 1/8" to 2"
BSPT Left : Ø 1/8" to 2"
NPT : Ø 1/8" to 2"
Stainless steel
BSPT Right : Ø 3/8" to 1.1/4"

Description	Case	kg	code
2 heads + 1 pawl + 1 handle	sheet steel	20	V136280
BSPT Right: 1/2-3/4-1-1.1/4-1.1/2-2	670x230x150 mm		



ex USAG 300 N-R
Assortment 3/8" - 1.1/4"

Tubular steel handles.
Reversible ratchet for increased manoeuvrability.
Ergonomic grip.
Heads can also be used on Phenix II B portable electric threading machine.
Plastic case.

Capacity :
Steel
BSPT Right : Ø 1/8" to 1.1/4"
BSPT Left : Ø 1/8" to 1.1/4"
NPT : Ø 1/8" to 1.1/4"
Stainless steel
BSPT Right : Ø 3/8" to 1.1/4"

Description	Case	kg	code
Head 1 pawl with handle	Plastic	6	V136301
BSPT Right: 3/8 - 1/2 - 3/4 - 1 - 1.1/4	(429 x 240 x 125 mm)		
Head 1 pawl with handle	Plastic	5,6	V136311
BSPT Right: 1/2 - 3/4 - 1 - 1.1/4	(429 x 240 x 125 mm)		



Portable electric threading machine Phenix II B

Compact and strong:
ideal for use on site, in the workshop and in restricted spaces.
Very reliable singlephase universal 750 W motor (220 V - 50/60 Hz or 115 V - 50/60 Hz.)
Geared reverse
for a quick return.
Heads can also be used with manual threaders.

Capacity :
Steel
BSPT Right : Ø 1/8" to 2"
BSPT Left : Ø 1/8" to 2"
NPT : Ø 1/8" to 2"
Stainless steel
BSPT Right : Ø 3/8" to 1.1/4"

capacity "	Kg	code
1/2-2	7,800	V137500

Assortment portable electric threading machine Phenix II B

Supplied in plastic case with:
- 1 blocking vice
- 1 reducer for octagonal heads 1/8" to 1.1/4"



BSPT dix "	Voit	W	Kg	code
1/2-3/4-1-1.1/4-1.1/2-2	230	750	22,600	V137530

Cutting oil

Specially designed for manual and powered threading. With its very high lubricating ability, Virax cutting oil ensures better quality threads and lengthens the service life of both dies and machines. Water emulsifiable. Odourless.

content	code
5 litri	V110105



WARNING : if using for drinking water networks, it is essential to rinse the detergent.

Mineral cutting oil

supplied in spray can

content	code
500 ml	V110200

Single-phase asynchronous motor 230 V
 Power: 1100 Watt
 Dimensions: 1160x650x1100 mm
 Weight: 58 Kg



Threading machine 2"

Easy and effective threading.

Assembly, regulation, start: everything has been conceived to make threads in the best conditions.

Supplied with:

- 1 self opening die head 1/2" to 2" BSPT
- 1 set of chasers 1/2"-3/4" BSPT right
- 1 set of chasers 1"-2" BSPT right
- 1 set of brushes
- 1 steel cutting wheel
- 1 container of cutting oil 5 L (code V110105)
- 4 legs
- 1 safety pedal

capacity "	Kg	code
1/2-3/4-1-2	57,700	V162120

Single-phase asynchronous motor 230 V
 Power: 1600 Watt
 Dimensions: 1200x870x1200 mm
 Weight: 142 Kg



Threading machine 4"

Specialty studied for large series; high resistance.

Ideal for work on site and in workshops.

Supplied with:

- 1 self opening die head 1/2" to 2" BSPT
- 1 self opening die head 2.1/2" to 4" BSPT
- 1 set of chasers 1/2"-3/4" BSPT right
- 1 set of chasers 1"-2" BSPT right
- 1 set of chasers 2.1/2"-4" BSPT right
- 1 steel cutting wheel
- 2 containers of cutting oil 5 L (code V110105)
- 4 legs

capacity "	Kg	code
1/2-3/4-1-2-2.1/2-4	142,200	V162140



Threading head
with automatic opening
or manual connection



Easy and quick setting
of the threading size



Gear oil pump
with self-trigger.
Adjustable oil flow



Clutch chuck and long vices
for quick grip



Long vices for safe
tightening.



Quick vice change



Tube-cutter with
self-centring system



High-resistant dies
available in HSS and
standard



Dies with groove for quick
and easy change



Position ball for easy
and quick change



Folding trolley for threading machine 2" (V162120)

A man by himself can load and download the machine from vehicles
 The trolley is provided with **service jacks** to lift and down the machine.
Loading system without disassembling the machine.
 Stability legs.
 Supplied with 1 download system and 1 set of service screws.

for machine	Kg	code
V162120	24,500	V162460



Easy displacement



Position the upper part of the trolley on the vehicle entrance



Lift and push to load the equipment



Support surface for tools and connections



Trolley for threading machine 4" (V162140)

Equipped with 4 wheels and handles for easy transport.
 Supplied with service screws.

for machine	Kg	code
V162140	31,500	V162461



Easy displacement



Load on a small vehicle



Easy transit on sidewalk



Support surface for tools and connections



Quick pipe wrench

to tighten quickly and automatically the pipes: by running the wrench, the jaws tighten the pipes very strongly. Suitable also to tighten/untighten nuts.



A "	A mm	L mm	kg	code
1	34	250	0,550	V010123
1.1/2	49	350	1,450	V010124
2	60	450	2,600	V010126

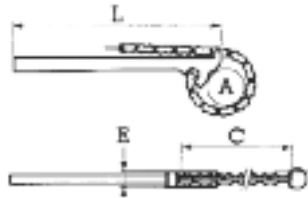


ex USAG 306 R

Chain wrench

Reversible jaws: longer life of the wrench.

Very strong model for heavy duty applications in chemical and oil industry, shipyards etc.



A tube "	A tube mm	LxC mm	kg	code
1/4-2.1/2	13-76	550x415	3,200	V010731
3/4-4	27-114	900x560	5,900	V010732
1-6	34-165	1065x690	8,700	V010733
1.1/2-8	48-219	1285x1090	14,500	V010734
2-12	60-320	1600x1440	24,000	V010735



For the complete range of pipe wrenches see Catalog-Prclist USAG 50/2009 page. 76÷78



Drum-type manual pipe cleaner

Red lacquered metal pay-off drum for quick cable storage.

Locking screw.

Ergonomic black lacquered wooden handle.

Supplied with a pair of gloves.

Ø tube mm	Ø cavo mm	L cavo m	kg	code
25-50	6,35	7,50	2,075	V290600



Sanicrom basin wrench

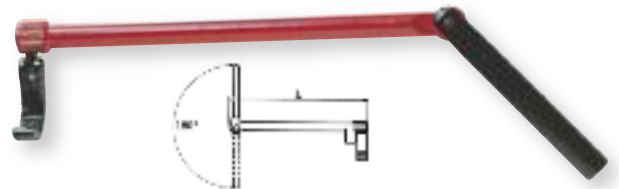
For washbasins and mixers with nut-fixing.

Hollow shaft, 25 mm length.

Hollow end for hexagonal nuts 13 mm.

Supplied with adapters: 9, 10, 11, 12, 14, 17 mm.

capacity mm	Kg	code
9-10-11-12-13-14-17	0,350	V261470



Reversible Sanicrom basin wrench

For nuts and connections on washbasins, bathtubs, sinks or bidets.

Direction of rotation reversed by pivoting the jaw without removing it from the tool.

Designed for tightening and loosening in difficult-to-reach locations.

Self-tightening jaw designed.

capacity "	Kg	code
1,1/2	0,565	V261420



Folding portable stand

Very sturdy angle-section legs. Supplied without vice.

H mm	P mm	P1 mm	kg	code
900	870	500	17,000	V200500



Single chain vice

Presetting screw. V-shaped pipe holder. Forged cam locking handle for immediate clamping. High-strength hardened steel chain. High yield malleable cast iron vice.

A tube "	A tube mm	kg	code
1/8-4	10-114	4,3000	V200340



Etau-griff®

Trapezoidal thread screw. High yield malleable cast iron vice. Reversible frame for obtaining the best working position on workbench, tripod or table. Hardened steel jaws. V-shaped pipe holder.



A tube "	A tube mm	kg	code
1/8-2	10-60	3,700	V200200
1/4-3	13-90	6,400	V200210



Professional frigor with eccentric-mounted turn-pin

for an impeccable finish and a perfect seal. End-of-travel release system for smoothing the flange. Feed screw fitted with a large handle for minimum effort.

Capacity on annealed copper pipes:

45° tapered flange: Ø 3/16" a 3/4" OD:
Precision tool for forming flanges on copper refrigeration pipes. Supplied in a plastic case containing die and yoke.

Ø external tube "	kg	code
3/16 - 1/4 - 5/16 - 3/8 - 1/2 - 5/8 - 3/4	1,970	V250580



Flaring set for copper

Reduced operating efforts thanks to:

- efficient demultiplication mechanism
- long, rigid arms
- tapered expansion point.

Lightweight alloy pliers (less than 800 gr) and high-strength T-profile handles.

Quick-change expander heads.

Ergonomic polypropylene grips solvents and grease-resistant.

Ø expansions	kg	code
12-14-16-18-22 mm	2,120	V252641



Spare expansion tool

Ø external mm	code
10	V252602
12	V252603
14	V252604
16	V252606
18	V252607
22	V252609

Ref. Catalog 2008

300 N (3/8"-1 1/4")
code 300382



V136301
page 92



300 R (1/2"-1 1/4")
code 300384



V136311
page 92



300 T (1/2"-2")
code 300385



V136280
page 93



300 B-BA



V136233÷136408
page 96



313
code 313001
code 313002



V210110-120-130-145
page 48



306 R
code 306203
code 306204
code 306205
code 306206
code 306208



V010731÷010735
page 14



314 AN
code 03140001



V210310
page 52



314 CN
code 03140003



V210320
page 52



314 D
code 314002



V210300
page 53



316 CN
code 316021÷26



V251106÷16
page 80



317 C
code 03170003



V211463
page 57



317 B
code 317012



V214040
page 58



317 K
code 317001



V214026
page 57





SWK Utensilerie S.r.l.
Via Volta, 3 · 21020 Monvalle (VA) Italia
Tel. 0332 790111 · Fax 0332 790363
info.mv@usag.it · www.usag-tools.com